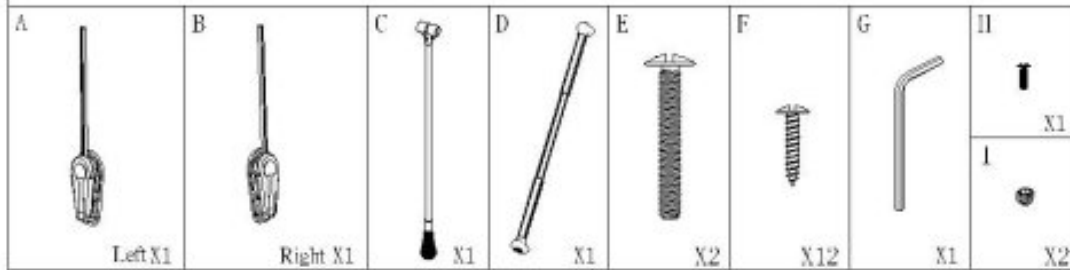


938.055/938.058 Assembly instruction for 14" depth cabinet



1

Step:

1. Measure and mark intersection of center line A-A (4" from front of cabinet) and bottom of mounting plate (60" - 63" from bottom of cabinet). This is very important.
2. Put paper template on the right side panel of cabinet, aim center line A-A of template at center line of cabinet.
3. Drill pre-hole based on template.
4. Move template and install pull-down on cabinet.

Side view

Suggestion : 1. The height of inner cabinet is 96" at least.
 2. Install the mounting plate from bottom of cabinet is about 60"-63".

